

Compact Hybrid Distribution Terminal Blocks

Ttec CXDB35/10 is a compact Distribution Terminal Block designed to suit standard MCB distribution boxes.

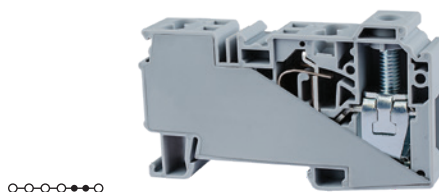
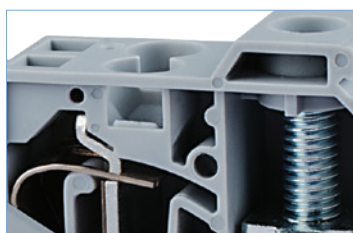
The Ttec CXDB35/10 is capable of accepting 35mm² cables at the input side and 4 wires of 10mm² can be connected at the output side.


The input cable is connected with a standard screw clamp and the output wires can be connected with quick and reliable spring clamp connections.

The Ttec CXDB35/10 is a modular system and standard shorting links can be used to add more connection points.

NOTE:

For distribution applications the total system current should not exceed 125A.



Model	Ttec CXDB35/10		
Width (Thickness) x Length	16 x 81.6 mm		
Height with DIN-Rail: 35 x 7.5 mm / 35 x 15 mm	46.8 mm / 54.3 mm		
Connection Possibility at Input as per	IEC	UL - CSA	
Stranded Wire	1.5 - 35 mm ²	14 - 2 AWG	
Wire Stripping Length	17 mm		
Connection Possibility at Output as per	IEC	UL - CSA	
Stranded Wire	0.2 - 10 mm ²	24 - 8 AWG	
Solid Wire	0.2 - 10 mm ²	—	
Wire Stripping Length	15 mm		
Ratings at Input as per	IEC60947-7-1	UL-1059	CSA22.2-158
Voltage	1000 V	600 V	600 V
Current	125 A	115 A	115 A
Torque	2.5 Nm	25 lb-in	25 lb-in
Ratings at Output as per	IEC60947-7-1	UL-1059	CSA22.2-158
Voltage	1000 V	600 V	600 V
Current	41 A	41 A	41A
Certification			
Rated Impulse Voltage/Pollution Degree	8 KV/3		